

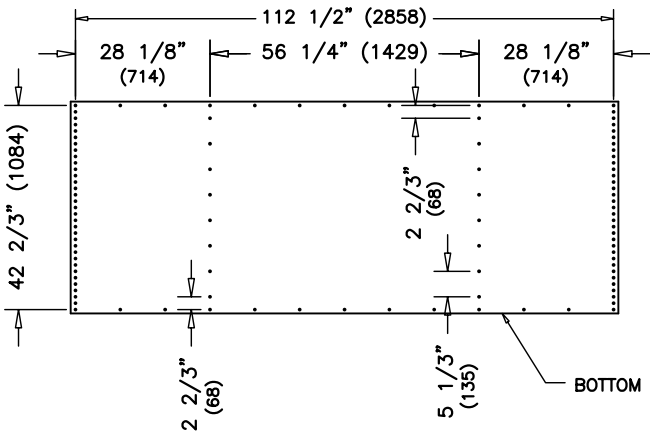
MODEL 2414SHBTZ1  
CAPACITY: 24,231 CU. FT. (686.2 CU. M.)  
ANCHOR BOLTS = 3/4" (20) A307, 32 REQ'D

SAE GRADE 8 BOLTS	SAE GRADE 8.2 BOLTS
SAE GRADE 8 & SAE GRADE 8.2 BOLTS ARE ESSENTIALLY EQUAL FOR SILO ERECTION.	
SAE GRADE 5 BOLTS	SAE GRADE 2 BOLTS
	NOT ALLOWED ANYWHERE ON SCAFCO SILOS
ASTM A325 BOLTS	ASTM A307 BOLTS
USED FOR STRUCTURAL CONNECTIONS	ALLOWED ONLY FOR ANCHOR BOLTS
CONTACT SCAFCO ENGINEERING DEPARTMENT BEFORE SUBSTITUTING ANY BOLTS ON SILOS.	

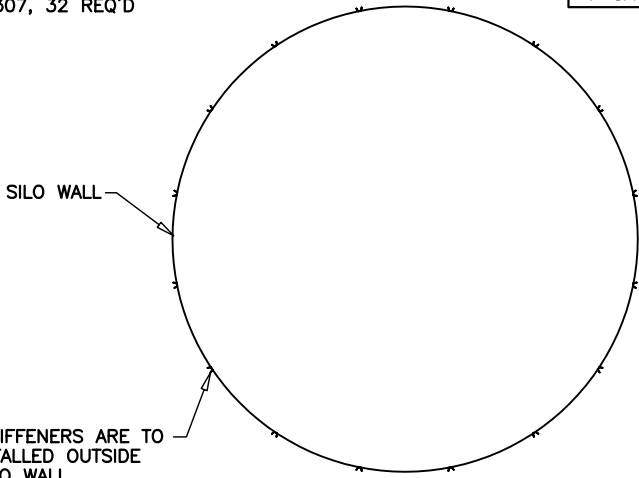
PARTS	GAUGE	THICKNESS (mm)	COLOR CODE	PART NO. / REMARKS
SPICE PLATES	14 GA	1.83	GREEN	214400
	12 GA	2.59	ORANGE	214192
	10 GA	3.30	BLACK	214124
	8 GA	3.76	BLUE	214130
	7 GA	4.55	GREEN	214194
STIFFENERS	14 GA	1.83	GREEN	214399
	12 GA	2.59	ORANGE	214122
	10 GA	3.30	BLACK	214121
	8SH GA	3.76	BLUE	215852
	8H GA	3.76	BLUE	214901
	8 GA	3.76	BLUE	214120
	7SH GA	4.55	GREEN	215398
	7H GA	4.55	GREEN	215397
	7N GA	4.55	GREEN	215380
	7 GA	4.55	GREEN	214187
WALL SHEETS	20 GA	0.86	BLACK	
	19 GA	1.04	WHITE	
	18 GA	1.17	UNPAINTED	
	17 GA	1.32	RED	
	16 GA	1.47	BLUE	
	15 GA	1.63	YELLOW	
	14 GA	1.83	GREEN	
	13 GA	2.24	BROWN	
	12 GA	2.59	ORANGE	
	11 GA	2.95	YELLOW	
	10 GA	3.30	BLACK	
	8 GA	3.76	BLUE	
	(2)12GA	2 x 2.59	ORANGE	LAMINATED
	(2)11GA	2 x 2.95	YELLOW	LAMINATED
	(2)10GA	2 x 3.30	BLACK	LAMINATED
ROOF PANELS	(2)8GA	2 x 3.76	BLUE	LAMINATED
	24 GA	0.66	UNPAINTED	
	22 GA	0.74	YELLOW	

COLOR CODES ARE PAINTED ON BOTTOM OF WALL SHEETS, STIFFENERS & SPICE PLATES.

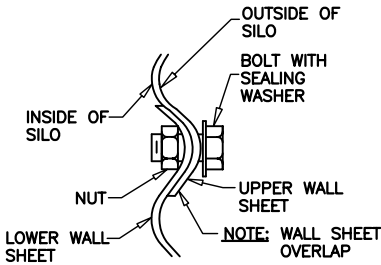
TYPICAL STIFFENER & SPICE PLATE PROFILES				
SPICE PLATE	STIFFENER	STIFFENER	HYBRID STIFFENER	SUPER HYBRID STIFFENER
14 GA	14 GA	7 GA	8H GA	8SH GA
12 GA	12 GA		7H GA	7SH GA
10 GA	10 GA			
8 GA	8 GA			
7 GA	7N GA			



TYPICAL WALL SHEET  
(EXTERNALLY STIFFENED)  
NTS



PLAN VIEW SHOWING  
EXTERNAL STIFFENERS



HORIZONTAL SEAM

- NOTES:
1. TOP WALL SHEETS ARE PUNCHED @ 3-1/8" (79 mm) O.C. AT THE TOP OF THE SHEET AND @ 9-3/8" (238 mm) O.C. AT THE BOTTOM.
  2. UPPER WALL SHEET RING ALWAYS OVERLAPS THE WALL SHEET RING BELOW IT. NO FIELD-DRILLING IS NECESSARY TO MATCH HOLES.
  3. BOTTOM RING OF WALL SHEETS HAS INWARD FLANGE.
  4. \* INDICATES SPLICE PLATE (SEE CHART FOR PART NO.).
  5. **TO PREVENT STRIPPING OFF THE SEALING WASHER FROM THE BOLT HEAD. ALWAYS DRIVE THE NUT (INSTEAD OF THE BOLT) TO FASTEN CONNECTIONS.**
- WALLSHEET-TO-WALLSHEET CONNECTION**
1. HORIZONTAL SEAMS - USE 3/8" x 1" (10 mm x 25 mm) GR. 8.2 BOLTS (290103).
  2. HORIZONTAL SEAMS - ALL BOLT SPACING IS @ 9-3/8" (238 mm) O.C., EXCEPT THOSE MARKED ■, BOLT SPACING IS @ 3-1/8" (79 mm) O.C.
  3. VERTICAL SEAMS - USE 3/8" x 1" (10 mm x 25 mm) GR. 8.2 BOLTS (290103).
- STIFFENER-TO-WALLSHEET CONNECTION**
1. USE 3/8" x 1" (10 mm x 25 mm) GR. 8.2 BOLTS (290103), EXCEPT THOSE MARKED ▲, USE 3/8" x 1-1/4" (10 mm x 32 mm) GR. 8.2 BOLTS (290389).
- SPLICE PLATE-TO-STIFFENER CONNECTION**
1. USE 3/8" x 1" (10 mm x 25 mm) GR. 8.2 BOLTS (290103), EXCEPT THOSE MARKED ▲, USE 3/8" x 1-1/4" (10 mm x 32 mm) GR. 8.2 BOLTS (290389).
- SPLICE PLATE FLANGE-TO-STIFFENER FLANGE CONNECTION**
1. USE 3/8" x 1" (10 mm x 25 mm) GR. 8.2 BOLTS (290103).

APPROVED

CHECKED

DRAWN

BY

EPR

20DEC01

DATE

20DEC01

DRAWING NO.:

2414SHBTZ1

REV.

MODEL 2414SHBTZ1

SILO SPECIFICATIONS

Tel: 509-535-1571 \* Fax: 509-535-9130 \* mail@scfco.com \* www.scfco.com

SCAFECO®  
Engineering & Construction

SCAFCO Grain Systems Company

6200 E. Main Avenue  
PO Box 11215  
Spokane, WA 99211-1215, USA